

CENTENNIAL COLLEGE ASHTONBEE CAMPUS LIBRARY & STUDENT CENTRE

Toronto / Ontario / Canada





TABLE OF CONTENTS

BACKGROUND

- 1 Campus Background and need for a new Library
- 2 Site Plan
- 3 - 4 Campus Renewal
- 5 - 6 Floor Plan
- 6 Cost Data

ARCHITECT STATEMENT

- 7 Architect Statement
- 8 Building Section

LIBRARY STATEMENT

- 9 Library Statement
- 10 Library Program Axonometric

ALL PHOTOGRAPHS

- 11 - 12 Interior view showing major circulation
- 13 Library entrance and view of administrative area
- 14 Interior view of two public spaces, using existing lighting only
- 15 - 16 Interior view showing a typical user area
- 17 - 18 Interior view of student bleachers and student centre
- 19 Exterior view towards entrance and into library space from below
- 20 North elevation with view into library at night
- 21 Exterior (long shot) view of the building showing its relationship to adjacent structures, setting, and environment
- 22 North elevation showing student plaza
- 23 South elevation, looking north towards the entrance to campus

CAMPUS BACKGROUND AND NEED FOR A NEW LIBRARY

THE NEW LIBRARY IS THE ARRIVAL GATEWAY TO THE REVITALIZED ASHTONBEE CAMPUS, THE LARGEST TRANSPORTATION TECHNOLOGY SCHOOL IN CANADA.

Located near a major intersection and in the Golden Mile neighbourhood of Toronto, the Ashtonbee Campus trains technicians in every form of land, sea and air transportation. The campus is surrounded by residential, park lands, retail and commercial, and light industrial typology. While generating successful business partnerships and a thriving training program, the campus suffered from aging infrastructure and buildings, and lacking student support services and social gathering spaces.

The new library is not a traditional library. It is coupled with student services, bookstore, student commons, and a cultural centre. The result provides students with on-site support services, promoting a culture of engagement, learning, and social interaction, essential to the progress of the campus.



CAMPUS CONTEXT



- 1 NEW LIBRARY & STUDENT HUB
- 2 NEW RECREATION & WELLNESS CENTRE
- 3 EXISTING ASHTONBEE BUILDING
- 4 EXISTING PARKING
- 5 EXISTING AUTOMOTIVE BUILDING

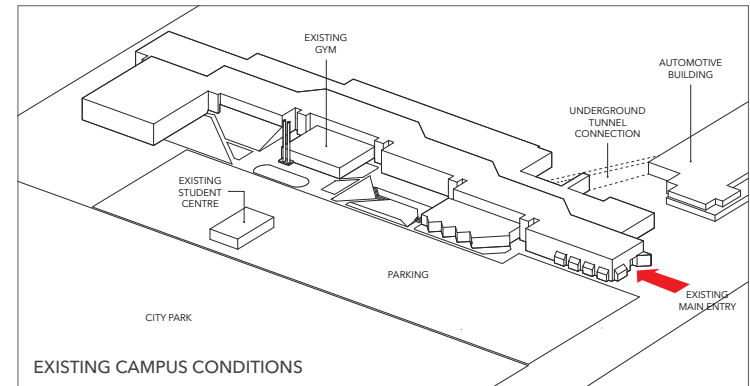
SITE PLAN

CAMPUS RENEWAL

THE NEW LIBRARY IS THE CENTRE OF THE CAMPUS RENEWAL PROJECT, PROVIDING NEW IDENTITY AND VITALITY TO THE 1970'S SITE.

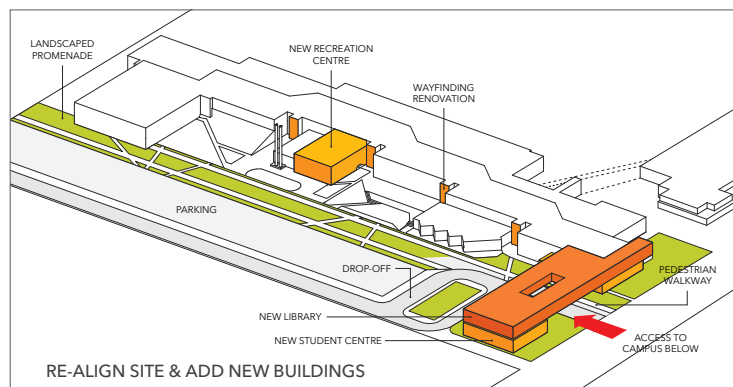
The primary goal of the new Library was to rejuvenate the campus and deliver student oriented services to support the thriving academic programming. Since opening, the building has been lauded by students and staff for its high quality of light, space, and diversity of learning spaces. Usership of the library has increased by 150% and the regeneration of the Ashtonbee Campus is clear. This new environment has increased the attraction and retention of high caliber students, staff, and industry partners.

GOALS & REQUIREMENTS:



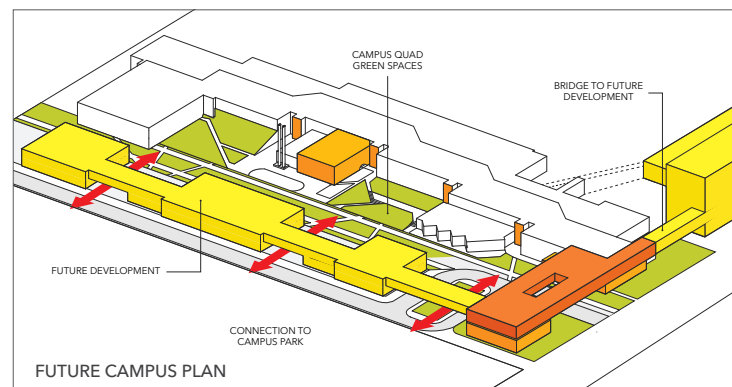
- Create gateway into the campus
- Clear outward identity
- Improve both student amenities and academic spaces
- Address dated recreation spaces
- Enhance connectivity between current and future campus buildings
- Accommodates for future building and infrastructure developments

EXPANSION, RENO & NEW:

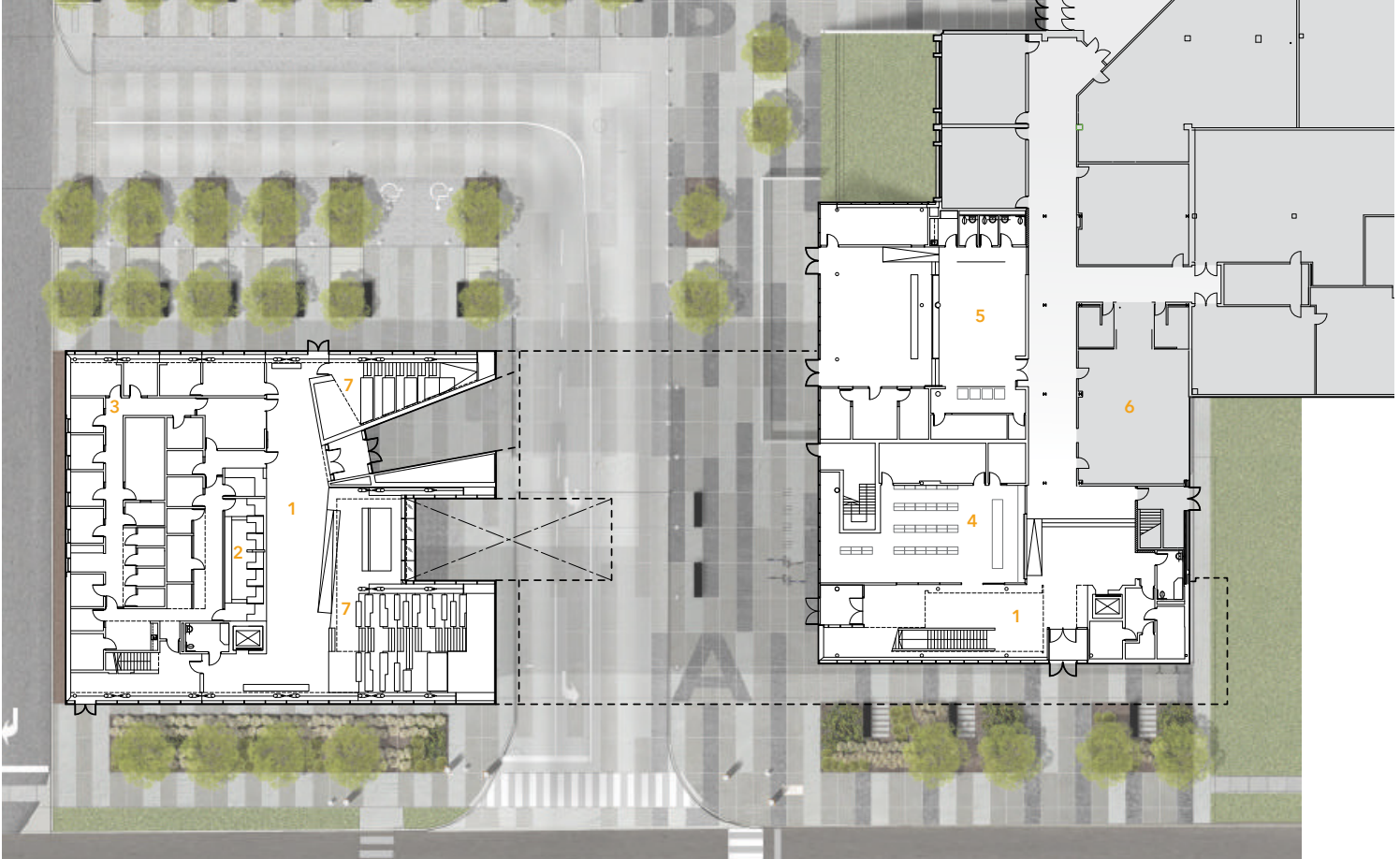


- Align site access with new intersection
- Campus wide pedestrian promenade
- New library & student centre
- New recreation & wellness centre
- Renovation of staff & teaching spaces
- New landscape & parking strategy
- Organize internal drop-off
- Asbestos remediation

FUTURE CAMPUS GOALS:

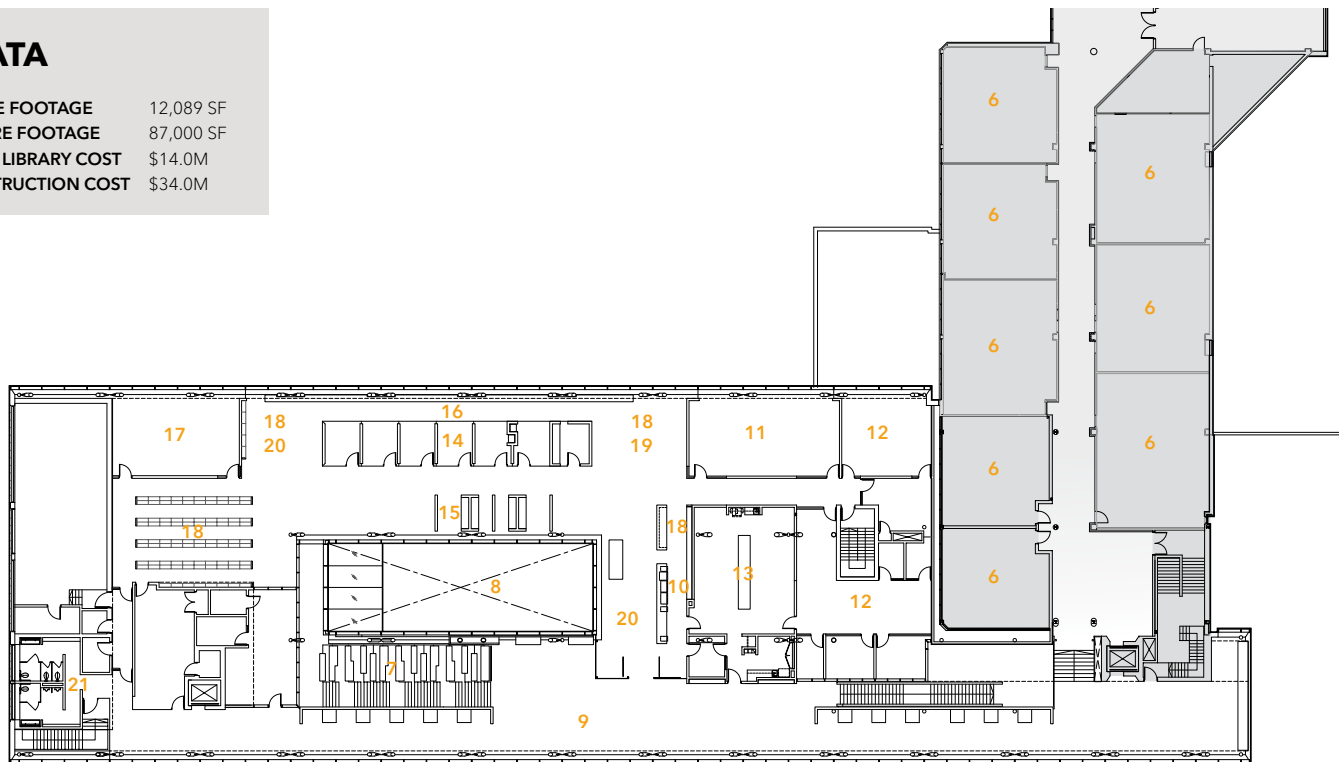


- Future buildings & underground parking
- 93 Warden Building redeveloped as mixed education & housing
- Library Building to bridge further east (connecting entire campus)
- Pedestrian promenade to link series of green spaces / courtyards
- Future exiting to Warden Avenue



COST DATA

LIBRARY SQUARE FOOTAGE	12,089 SF
OVERALL SQUARE FOOTAGE	87,000 SF
SECOND FLOOR LIBRARY COST	\$14.0M
OVERALL CONSTRUCTION COST	\$34.0M



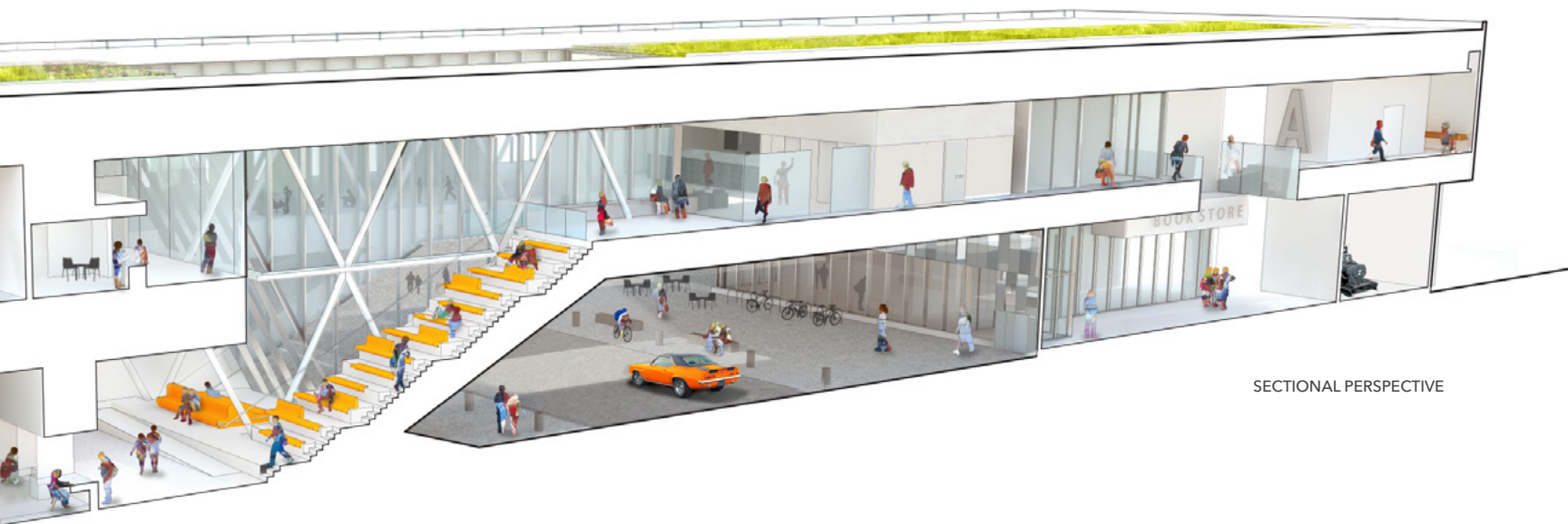
- | | |
|-----------------------|---|
| 1 LOBBY/RECEPTION | 12 LEARNING CENTRE |
| 2 STUDENT SERVICES | 13 STAFF WORKROOM |
| 3 STUDENT LIFE/CON-ED | 14 TECH STUDIOS / GROUP STUDY ROOMS |
| 4 BOOKSTORE | 15 ADAPTIVE TECHNOLOGY STATIONS / MULTIMEDIA VIEWING STATIONS |
| 5 STUDENT CENTRE | 16 BAR SEATING AT WINDOWS |
| 6 CLASSROOM | 17 SILENT STUDY ROOM |
| 7 STUDENT BLEACHERS | 18 SHELVING |
| 8 OPEN TO BELOW | 19 COMPUTER STATIONS |
| 9 COMMONS | 20 LOUNGE SPACES |
| 10 LIBRARY DESK | 21 WASHROOM |
| 11 COMPUTER LAB | |

ARCHITECT'S STATEMENT

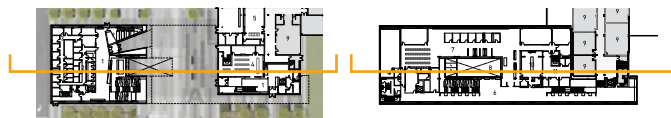
THE DESIGN OF THE NEW LIBRARY ACTS AS A 'BRIDGE' IN BOTH FIGURATIVE AND LITERAL WAYS. IT ACTS AS A BRIDGE: TO COMMUNITY, TO LEARNING, AND TO CURRENT & FUTURE PLANNING.

The new library is fully integrated with the student services programming; the learning spaces it provides are not limited by the library's enclosure. The building presents a transparent and open identity to the outside world bringing students, staff, and community together. It is the new face and arrival gateway of campus. The library and student support spaces are planned around a central suspended courtyard spanning from ground to second floor. The arrival and circulation spirals around this light filled void from public to private - noisy to quiet. Multiple and varied learning spaces happen along this journey and allow for interaction of students and staff in social, group, peer to peer, and tutored environments. Outwardly, the building presents an open and welcoming face declaring that the College is 'Open for Business'.





SECTIONAL PERSPECTIVE



LIBRARY STATEMENT

Strategically positioned as the new main entrance to the Ashtonbee Campus, the new Library welcomes everyone into Centennial College's learning-centred community.

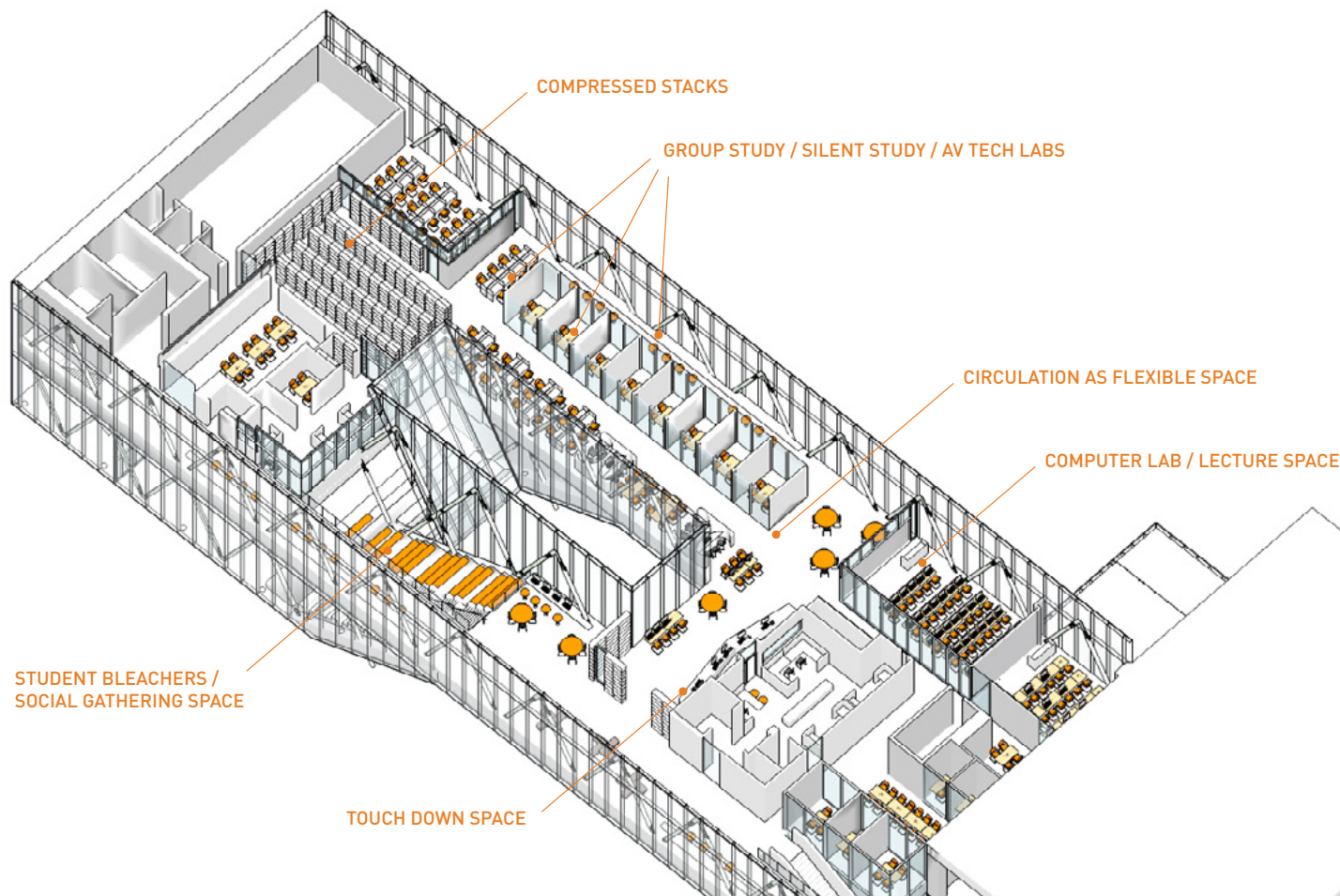
More than double the size of the original library, the new library provides diversity of space. From the open areas filled with natural light to the more structured collaborative learning environment in the group study rooms, students can choose from a variety of spaces that promote a culture of engagement, activity, and social interaction. For students seeking a more contemplative study environment, there is a long study bar along the north-facing glass walls and a silent study room with carrels.

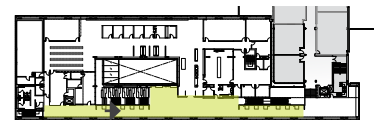
Access to technology and digital collections is vital to today's students. Designed to support technology-enhanced learning, the new library features computer workstations, two presentation technology studios, two adaptive technology workstations, a 40 seat library teaching lab, iPad and netbook lending service, and a copy / printer room. Wireless is available throughout the campus, supplemented by wired drops. There are a total of 125+ electrical outlets throughout the library and Commons area.

Other exemplary features that merit attention:

- The Student Commons is located immediately outside the library gates and allows space for study and socializing whenever the campus is open.
- Touchdown areas with soft seating are situated throughout the library and the Forum.
- A Learning Centre specifically designed for tutoring and supplemental instruction programs is an active service point within the library.
- A fully-fitted library staff workroom for campus library staff and technical services is supplemented with a meeting room that supports staff training

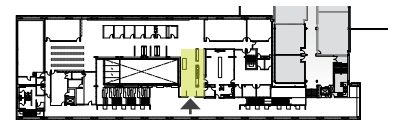
Centrally located, and directly connected to new student services space, the new library offers students a blend of study and work spaces, access to technology, and a place to socialize, resulting in a significant increase in overall student engagement in library services.

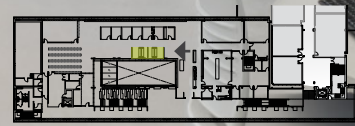




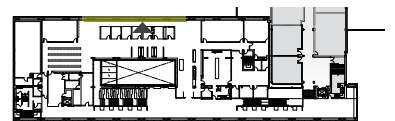


CIRCULATION SPACE DOUBLES AS THE STUDENT COMMONS, A CASUAL SOCIAL AND STUDY SPACE

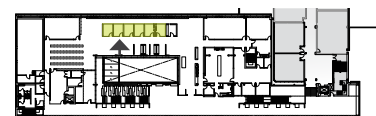
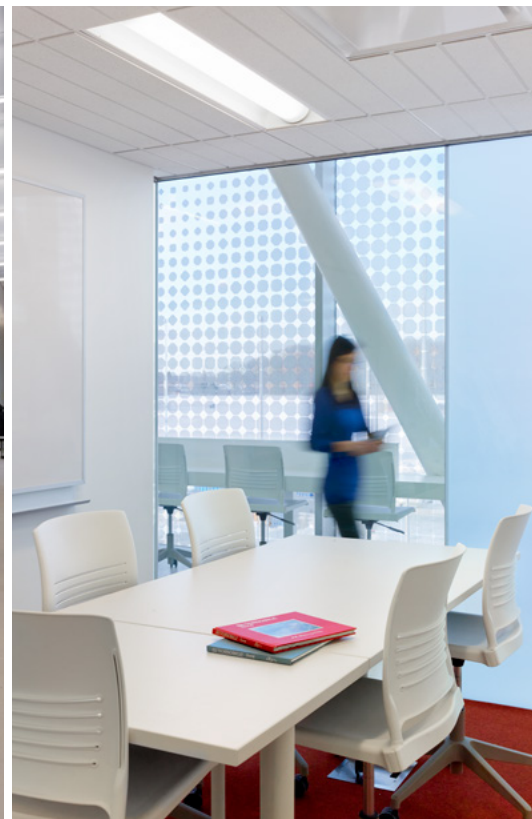


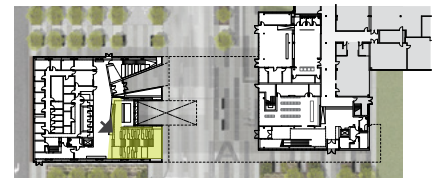


SINCE OPENING, THE BUILDING HAS BEEN LAUDED BY STUDENTS AND STAFF FOR ITS HIGH-QUALITY OF LIGHT, SPACE AND DIVERSITY OF LEARNING SPACES

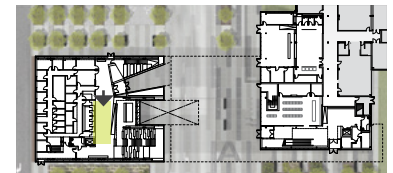


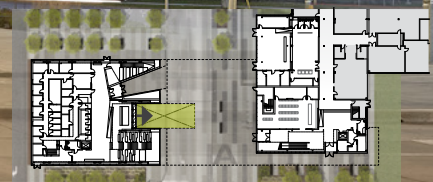
TYPICAL BAR SEATING AT WINDOWS





ACCESS TO LIBRARY FROM GROUND LEVEL





VIEW TOWARDS ENTRANCE AND INTO LIBRARY SPACE FROM BELOW



NORTH ELEVATION WITH VIEW INTO LIBRARY AT NIGHT 20







SOUTH ELEVATION, LOOKING NORTH TOWARDS THE NEW CAMPUS GATEWAY